



Product Service

# CERTIFICATE

No. Z2 17 04 53696 01964

**Holder of Certificate: KOMPAN A/S**

C.F. Tietgens Boulevard 32C  
5220 Odense SØ  
DENMARK

**Certification Mark:****Product: Playground equipment**

The product was tested on a voluntary basis and complies with the essential requirements. The certification mark shown above can be affixed on the product. It is not permitted to alter the certification mark in any way. In addition the certification holder must not transfer the certificate to third parties. See also notes overleaf.

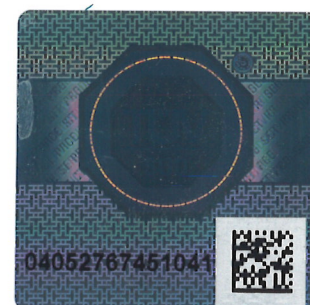
Test report no.: 713099767-19

Valid until: 2022-04-09

Date, 2017-04-11

Page 1 of 2

( Tobias Hofmann )





Product Service

**CERTIFICATE****No. Z2 17 04 53696 01964****Model(s):**

PCM110103, PCM110203, PCM110303, PCM110401,  
 PCM110501, PCM110603, PCM110703, PCM110803,  
 PCM110903, PCM111003, PCM111101, PCM111201,  
 PCM111301, PCM112101, PCM112203, PCM112303,  
 PCM112401, PCM112503, PCM210101, PCM210203,  
 PCM210303, PCM210401, PCM210503, PCM210603,  
 PCM210703, PCM210803, PCM210901, PCM211703,  
 PCM212003, PCM212101, PCM212203, PCM212303,  
 PCM310101, PCM310203, PCM310903, PCM311003,  
 PCM410103, PCM410403

**Parameters:**

Playground combination system based on the following parts.

Three, four and six side towers with floors in 28,  
 38, 58, 78, 88, 98, 118, 148, 178, 238 cm.

Attachments: Stair cases, front floors, ladders, ramps,  
 climbing nets, climbing walls, crawling tunnels, bridges,  
 firemen poles, sliding poles, swings, overhead ladders,  
 over-head wheels, side panels with play activities or  
 closed, roof in different designs, slides and slider  
 with a curved downward track.

Steel posts pre galvanized and powder coated:  
 Ø101X2 mm tube.

Wood posts of impregnated pine: Ø100 mm

Side panels, roofs floors, steps, ramps, climbing  
 walls and platforms:

10 mm HPL, 3 mm Aluminum, 19 mm HDPE, 18 mm Eco grip  
 plates

Balcony: Galvanized steel attachment.

Tubes elements like crossbars, handrails, guardrails,  
 fireman poles, ladder steps, track rider, swing crossbar:  
 Ø32X2 mm, Ø38X2 mm, Ø42,4X3,2 mm, Ø48,3X4 mm,  
 Ø76,1X4,5 mm, Ø101,2 mm, Ø31,7X1,5 mm covered with  
 Ø39 mm PP tubes,

Net and rope elements: Ø16 mm PP covered steel rope

Slides: stainless steel, LDPE slide, LDPE segment slide  
 or PE tunnel slide.

**Tested  
according to:**

DIN EN 1176-1:2008  
 EN 1176-1:2008  
 DIN EN 1176-2:2008  
 EN 1176-2:2008  
 DIN EN 1176-3:2008  
 EN 1176-3:2008

**Production  
Facility(ies):**

63062

Page 2 of 2