



Product Service

CERTIFICATE

No. Z2 14 11 53696 01506

Holder of Certificate: **Kompan A/S**
C.F. Tietgens Boulevard 32C
5220 Odense SØ
DENMARK

Production Facility(ies): 63062

Certification Mark:



Product: **Playground equipment**
Model(s): **M41000P, M41100P, M41200P**

Parameters: Playground houses based on the following parameters.
Floors, Side panels and roofs: 19 mm HDPE sheets. Play activities like tables and sliding elements are attached at the sides. Front and Side plates in different designs.

Tested according to: DIN EN 1176-1:2008
EN 1176-1:2008

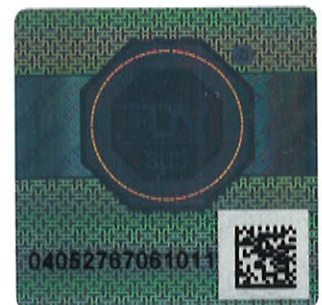
The product was tested on a voluntary basis and complies with the essential requirements. The certification mark shown above can be affixed on the product. It is not permitted to alter the certification mark in any way. In addition the certification holder must not transfer the certificate to third parties. See also notes overleaf.

Test report no.: 713036889-37

Valid until: 2019-11-11

Date, 2014-11-13


(Harald Bardowicks)



Page 1 of 1